



**DESCRIPTION**

Solenoid valve 2 way normally closed with servo-assisted diaphragm

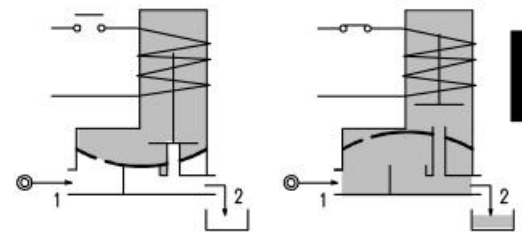
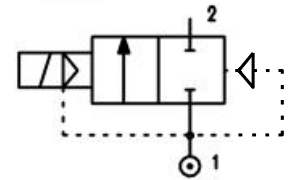
**CONSTRUCTION**

Body and cover	Brass
Armature tube	Stainless steel
Plunger and core	Stainless steel
Springs	Stainless steel
Seal material	NBR
	FPM
	EPDM



**FEATURES**

- Minimum differential pressure 0.15 bar
- Maximum allowable pressure\*: 25 bar (up to G1"1/2)  
20 bar (over G1"1/2)
- Maximum fluid viscosity 25 cSt (mm<sup>2</sup>/s)
- Ambient temperature : with class F coil -10°C +55°C  
with class H coil -10°C +80°C
- Preferred mounting position with vertical coil above



4

**OPTIONS :**

- Manual override
- Electroless nickel plating
- Explosion proof coil according to ATEX - EExmII Series 7 (up to G1"1/4 orifice 30)
- Version with slow closing diaphragm
- Version for vacuum applications (air/gas)
- Version for use with oxygen (up to G1")

Certified versions: SVGW

CODE ① ②	Connection G ISO 228	Orifice mm	KV m <sup>3</sup> /h	Differential pressure bar			Nominal power			Coil		Seal ①	Temp. range °C
				Min	Max		AC Inrush	VA Holding	DC Watt	Series	Width		
					AC	DC							
E107B.....10///.....	1/4"	10	1.5	0.15	15	15	12	8	6.5	3	22	NBR=B  EPDM=E  FPM=V	-10+90      -10+130
E107C.....10///.....	3/8"	10	1.7	0.15	15	15	12	8	6.5	3	22		
E107C.....12///.....	3/8"	12	2.2	0.15	15	15	12	8	6.5	3	22		
E107D.....12///.....	1/2"	12	2.5	0.15	15	15	12	8	6.5	3	22		
E107E.....18///.....	3/4"	18	5.5	0.15	13	13	12	8	6.5	3	22		
E107F.....25///.....	1"	24	10.2	0.15	10	10	12	8	6.5	3	22		
E107G.....30///.....	1"1/4	30	15	0.15	10	10	12	8	6.5	3	22		
E107G.....37///.....	1"1/4	37	18	0.15	10	10	20	15	10	2	30		
E107H.....37///.....	1"1/2	37	21	0.15	10	10	20	15	10	2	30		
E107I.....50///.....	2"	50	36	0.15	10	10	20	15	10	2	30		
③ E107MB75///.....	2"1/2	75	75	0.3	10	10	20	15	10	2	30	NBR=B	-10+90
③ E107RB75///.....	3"	75	84	0.3	10	10	20	15	10	2	30		

- ① Seal Example: E107DB12///301 NBR seal
- ② Coil Coil 24V DC
- ③ NBR seals – Only for neutral liquid fluid

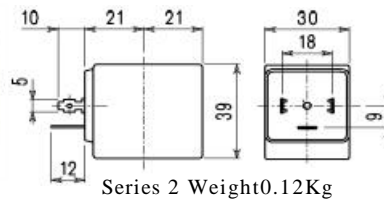
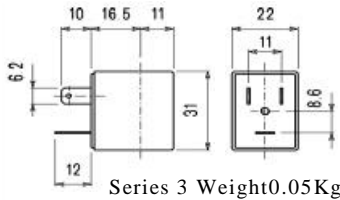
\*REMARK: The maximum allowable pressure PS for steam is 2,5bar (gauge pressure)



COILS	Alternating Current ~50/60Hz Volt							Direct Current Volt			Electrical connection	Connectors
	12	24	48	110	220 230	240	380	12	24	48		
Series 3 Width 22 Code ②	30A	30B	30C	30D	30E	30F	30G	300	301	302	DIN46244	PG9 code 10348000
Series 2 Width 30 Code ②	20A	20B	20C	20D	20E	20F	20G	200	201	202	DIN43650A	PG9 code 10349000

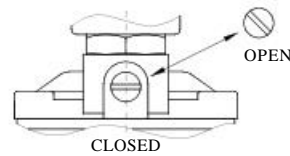
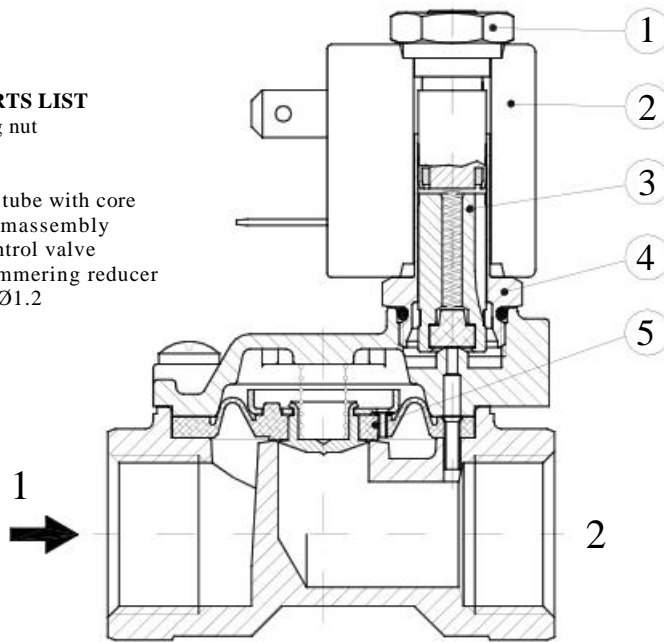
**DESCRIPTION**  
 Class F insulation  
 Voltage tolerance  
 AC +15%-10%  
 DC ±10%  
 Protection class  
 IP65 with connector fitted  
 IP00 without connector  
 Continuous service ED100%

**OPTIONS**  
 Class H insulation  
 Cable attached  
 Special coil powers  
 Special coil voltages

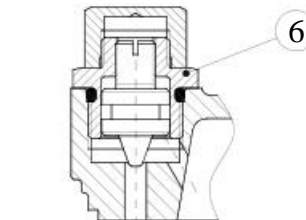


**SPARE PARTS LIST**

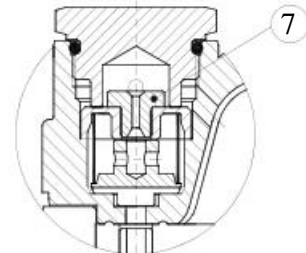
1. Coil fixing nut
2. Coil
3. Plunger
4. Armature tube with core
5. Diaphragm assembly
6. Speed control valve
7. Water hammering reducer Ø0.8-Ø1-Ø1.2



**MANUAL OVERRIDE**

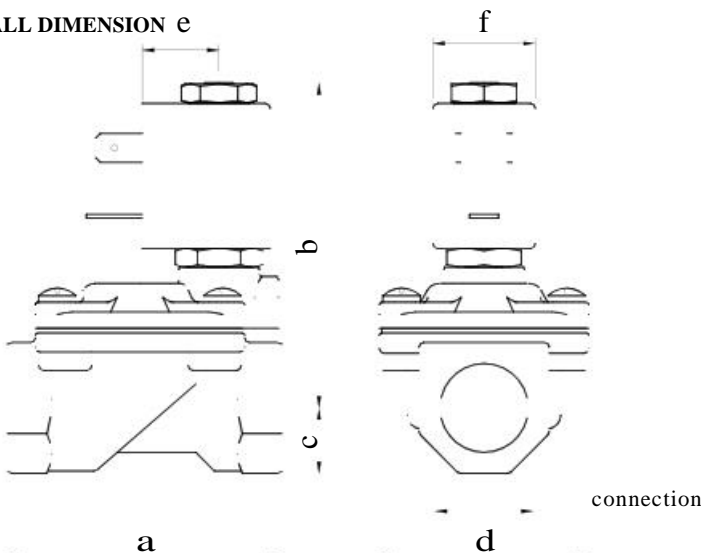


**FOR G1"1/4-1"1/2-2"**  
 Speed control valve



**FOR G2"1/2-3"**  
 Water hammering  
 reducer Ø0.8-Ø1-Ø1.2

**OVERALL DIMENSION e**



CONNECTION	a	b	c	d	e	f	Weight Kg	
G1/4"	10	49	65	11	32	16	22	0.25
G3/8"	10	49	65	11	32	16	22	0.25
G3/8"	12	59	70	14	45	16	22	0.45
G1/2"		59	70	14	45	16	22	0.45
G3/4"		79	74	18	55	16	22	0.66
G1"		96	85	20	72	16	22	1.05
G1"1/4 Ø30		119	92	25	85	16	22	1.80
G1"1/4		142	107	28	102	21	30	2.95
G1"1/2		142	107	28	102	21	30	2.74
G2"		158	117	35	119	21	30	4.32
G2"1/2		226	134	51	169	21	30	10
G3"		226	134	51	169	21	30	9.65