



DESCRIPTION

Solenoid valve 2 way normally open with servo-assisted diaphragm

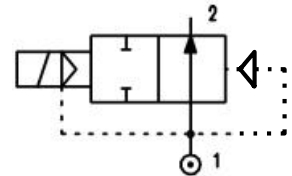
CONSTRUCTION

Body and cover Brass
 Armature tube up to G1" Stainless steel
 over G1" Brass
 Plunger and core Stainless steel
 Springs Stainless steel
 Seal material NBR
 FPM
 EPDM



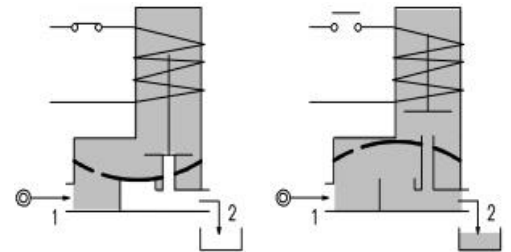
FEATURES

Minimum differential pressure 0.15 bar
 Maximum allowable pressure*: 25 bar (up to G1" 1/2)
 20 bar (over G" 1/2)
 Maximum fluid viscosity 25 cSt (mm²/s)
 Ambient temperature: with class F coil -10°C +55°C
 with class H coil -10°C +80°C
 Preferred mounting position with vertical coil above



4

OPTIONS : Electroless nickel-plating
 Explosion proof coil according to ATEX - EExmII Series 7 (up to G1")



| CODE ① ② | Connection G ISO 228 | Orifice mm | KV m ³ /h | Differential pressure bar | | | Nominal power | | | Coil | | Seal ① | Temp. range °C |
|----------------------|----------------------------|---------------|-------------------------|------------------------------|-----|----|---------------|---------------|------------|--------|-------|-----------|----------------------|
| | | | | Min | Max | | AC Inrush | VA Holding | DC Watt | Series | Width | | |
| | | | | | AC | DC | | | | | | | |
| E207B.....10///..... | 1/4" | 10 | 1.5 | 0.15 | 15 | 15 | 12 | 8 | 6.5 | 3 | 22 | NBR=B | -10+90 |
| E207C.....10///..... | 3/8" | 10 | 1.7 | 0.15 | 15 | 15 | 12 | 8 | 6.5 | 3 | 22 | | |
| E207C.....12///..... | 3/8" | 12 | 2.2 | 0.15 | 15 | 15 | 12 | 8 | 6.5 | 3 | 22 | | |
| E207D.....12///..... | 1/2" | 12 | 2.5 | 0.15 | 15 | 15 | 12 | 8 | 6.5 | 3 | 22 | | |
| E207E.....18///..... | 3/4" | 18 | 5.5 | 0.15 | 13 | 13 | 12 | 8 | 6.5 | 3 | 22 | EPDM=E | <+140 |
| E207F.....25///..... | 1" | 24 | 10.2 | 0.15 | 10 | 10 | 12 | 8 | 6.5 | 3 | 22 | | |
| E207G.....30///..... | 1" 1/4 | 30 | 15 | 0.15 | 10 | 10 | 12 | 8 | 6.5 | 3 | 22 | FPM=V | -10+130 |
| E207G.....37///..... | 1" 1/4 | 37 | 18 | 0.15 | 10 | 10 | 20 | 15 | 10 | 2 | 30 | | |
| E207H.....37///..... | 1" 1/2 | 37 | 21 | 0.15 | 10 | 10 | 20 | 15 | 10 | 2 | 30 | | |
| E207L.....50///..... | 2" | 50 | 36 | 0.15 | 10 | 10 | 20 | 15 | 10 | 2 | 30 | | |
| E207MB75///..... | 2" 1/2 | 75 | 75 | 0.3 | 10 | 10 | 20 | 15 | 10 | 2 | 30 | NBR=B | -10+90 |
| E207RB75///..... | 3" | 75 | 84 | 0.3 | 10 | 10 | 20 | 15 | 10 | 2 | 30 | | |

- ① Seal Example: E207DB12///301 NBR seal
- ② Coil Coil 24V DC
- ③ NBR seals – Only for neutral liquid fluid

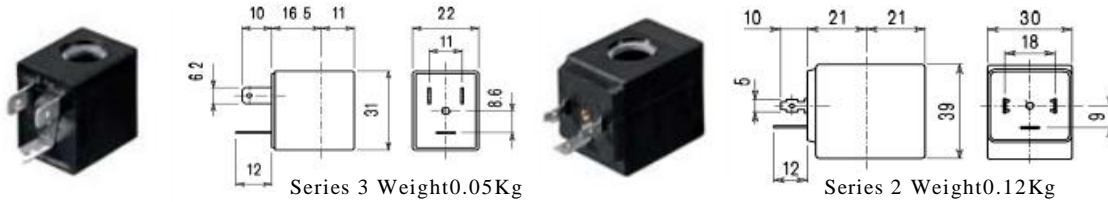
*REMARK: The maximum allowable pressure PS for steam is 2,5bar (gauge pressure)



| COIL | Alternating Current ~50/60Hz Volt | | | | | | | Direct Current Volt | | | Electrical connection | Connectors |
|--------------------------------|--------------------------------------|-----|-----|-----|------------|-----|-----|------------------------|-----|-----|--------------------------|-------------------------|
| | 12 | 24 | 48 | 110 | 220 230 | 240 | 380 | 12 | 24 | 48 | | |
| Series 3 Width 22 Code ② | 30A | 30B | 30C | 30D | 30E | 30F | 30G | 300 | 301 | 302 | DIN46244 | PG9 code 10348000 |
| Series 2 Width 30 Code ② | 20A | 20B | 20C | 20D | 20E | 20F | 20G | 200 | 201 | 202 | DIN43650A | PG9 code 10349000 |

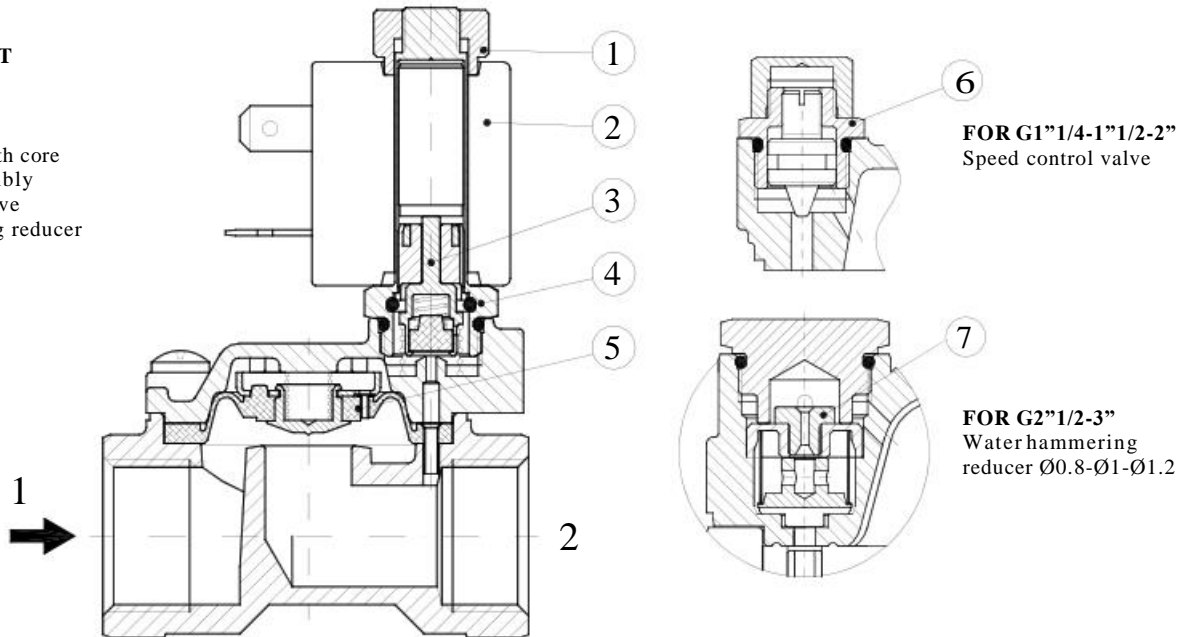
DESCRIPTION
 Class F insulation
 Voltage tolerance
 AC +15%-10%
 DC ±10%
 Protection class
 IP65 with connector fitted
 IP00 without connector
 Continuous service ED100%

OPTIONS
 Class H insulation
 Cable attached
 Special coil powers
 Special coil voltages

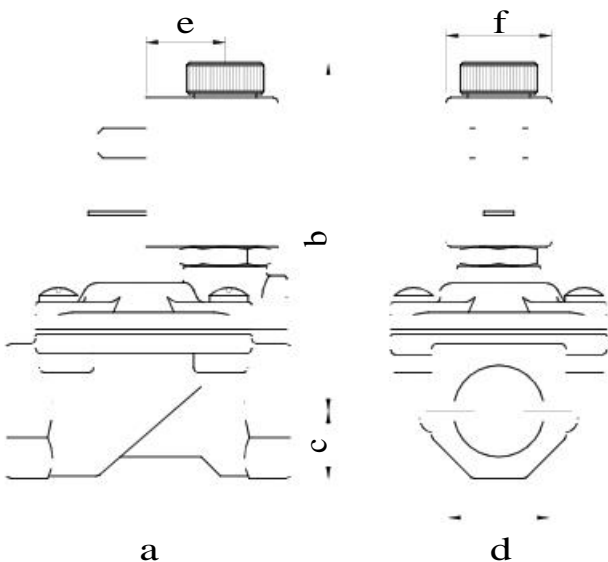


SPARE PARTS LIST

1. Coil fixing nut
2. Coil
3. Seal assembly
4. Armature tube with core
5. Diaphragm assembly
6. Speed control valve
7. Water hammering reducer
Ø0.8-Ø1-Ø1.2



OVERALL DIMENSION



| CONNECTION | a | b | c | d | e | f | Weight Kg |
|------------|-----|-----|----|-----|----|----|--------------|
| G1/4" 10 | 49 | 64 | 11 | 32 | 16 | 22 | 0.25 |
| G3/8" 10 | 49 | 64 | 11 | 32 | 16 | 22 | 0.25 |
| G3/8" 12 | 59 | 73 | 14 | 45 | 16 | 22 | 0.45 |
| G1/2" | 59 | 73 | 14 | 45 | 16 | 22 | 0.45 |
| G3/4" | 79 | 75 | 18 | 55 | 16 | 22 | 0.66 |
| G1" | 96 | 85 | 20 | 72 | 16 | 22 | 1.05 |
| G1 1/4 Ø30 | 119 | 96 | 25 | 85 | 16 | 22 | 1.80 |
| G1 1/4 | 142 | 105 | 28 | 102 | 21 | 30 | 2.95 |
| G1 1/2 | 142 | 105 | 28 | 102 | 21 | 30 | 2.74 |
| G2" | 158 | 119 | 35 | 119 | 21 | 30 | 4.32 |
| G2 1/2 | 226 | 135 | 51 | 169 | 21 | 30 | 10 |
| G3" | 226 | 135 | 51 | 169 | 21 | 30 | 9.65 |

connection