



**DESCRIPTION**

Drain valve

**CONSTRUCTION**

Solenoid valve series 106 with:

- Filterball in chromiumplated brass and stainless steel strainer, NBR seal  
Connection : inletG1/2", outletG3/8"orG1/2"
- TimerACL mod.11303000
- ConnectorDIN 43650A code 1034900A

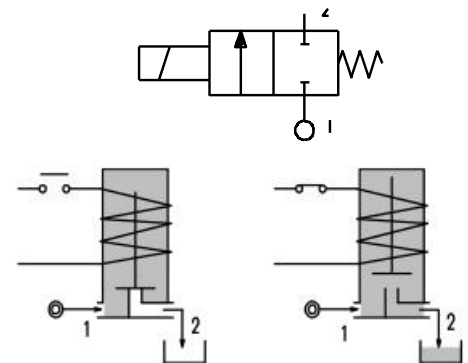


**2**

**FEATURES**

- Maximum allowable pressure 80 bar
- Maximum fluid viscosity 25cSt(mm<sup>2</sup>/s)
- Ambient temperature : with class F coil -10°C +55°C  
with class H coil -10°C +80°C
- Protection class IP65

**OPTIONS :** Electroless nickel plating on the valve body  
Overmoulded DIN cable connector



CODE ① ②	Connection G ISO 228	Orifice mm	KV m <sup>3</sup> /h	Differential pressure bar			Nominal power			Coil		Seal ①	Temp. range °C
				Min	Max		AC Inrush	VA Holding	DC Watt	Series	Width		
					AC	DC							
S106BV30///.....	1/4"	3	0.18	0	14	6	20	15	10	2	30	FPM=V	-10+130
S106BV40///.....	1/4"	4	0.26	0	7	3	20	15	10	2	30		
S106C.....30///.....	3/8"	3	0.25	0	15	10	20	15	10	2	30		
S106C.....35///.....	3/8"	3.5	0.32	0	10	8	20	15	10	2	30	NBR=B	-10+90
S106C.....40///.....	3/8"	4	0.36	0	8	5	20	15	10	2	30		
S106C.....45///.....	3/8"	4.5	0.41	0	6.5	3.5	20	15	10	2	30		
S106D.....30///.....	1/2"	3	0.25	0	15	10	20	15	10	2	30		
S106D.....35///.....	1/2"	3.5	0.32	0	10	8	20	15	10	2	30		
S106D.....40///.....	1/2"	4	0.36	0	8	5	20	15	10	2	30		
S106D.....45///.....	1/2"	4.5	0.41	0	6.5	3.5	20	15	10	2	30		
S106C.....30///.....	3/8"	3	0.25	0	25	24	40	30	27	5	36		
S106C.....35///.....	3/8"	3.5	0.32	0	20	19	40	30	27	5	36		
S106C.....40///.....	3/8"	4	0.36	0	16	15	40	30	27	5	36		
S106C.....45///.....	3/8"	4.5	0.41	0	14	13	40	30	27	5	36		
S106D.....30///.....	1/2"	3	0.25	0	25	24	40	30	27	5	36		
S106D.....35///.....	1/2"	3.5	0.32	0	20	19	40	30	27	5	36		
S106D.....40///.....	1/2"	4	0.36	0	16	15	40	30	27	5	36		
S106D.....45///.....	1/2"	4.5	0.41	0	14	13	40	30	27	5	36		

- ① Seal
- ② Coil

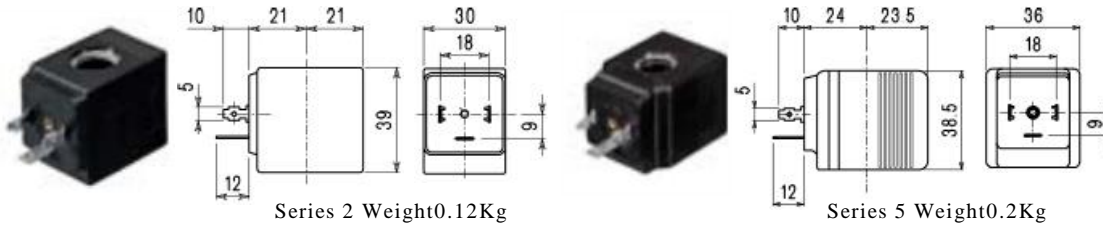
Example:S106CB25///201 NBR seal  
Coil 24V DC



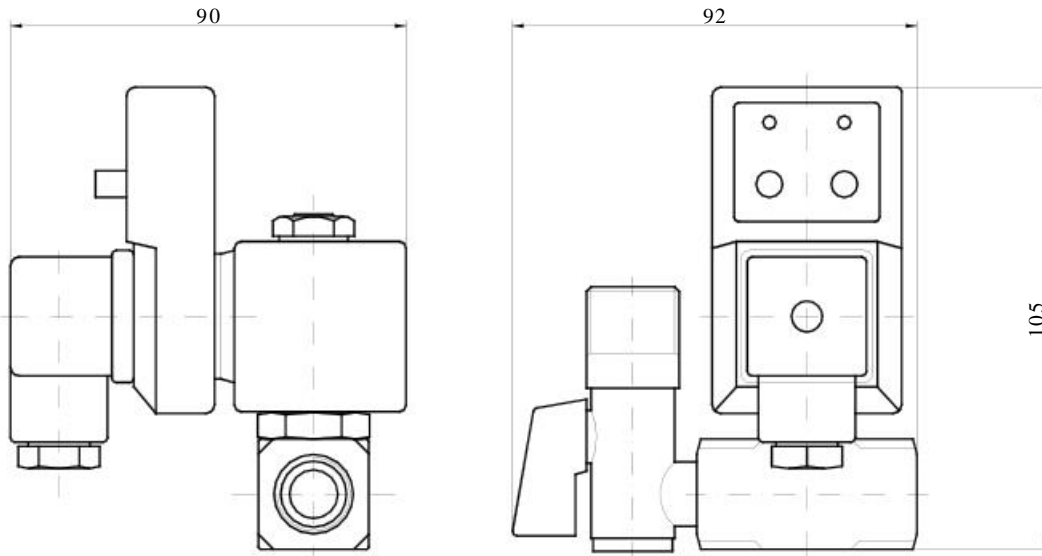
COILS	Alternating Current ~50/60Hz Volt							Direct Current Volt			Electrical connection	Connectors
	12	24	48	110	220 230	240	380	12	24	48		
Series 2 Width30 Code ②	20A	20B	20C	20D	20E	20F	20G	200	201	202	DIN 43650A	PG9 code 10349000
Series 5 Width36 Code ②	52A	52B	52C	52D	52E	52F	52G	521	521	522	DIN 43650A	PG11 code 10349001

**DESCRIPTIONS**  
 Insulationclass  
 Series 2=F Series 5=H  
 Voltage tolerance  
 AC +15%-10%  
 DC ±10%  
 Protectionclass  
 IP65withconnectorfitted  
 IP00withoutconnector  
 Continuous serviceED100%

**OPTIONS**  
 Class H insulation(series 2)  
 Cable attached  
 Special coil voltages  
 Special coil powers



**OVERALL DIMENSION**



Weight with coil series 2 = 0.52 Kg  
 Weight with coil series 5 = 0.60 Kg