



DESCRIPTION

Solenoid valve 2 way normally closed
direct acting poppet type

CONSTRUCTION

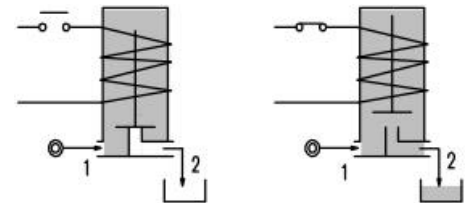
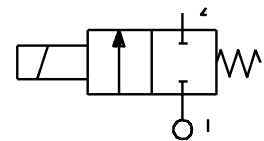
| | |
|------------------|-----------------|
| Body | Brass |
| Armature tube | Brass |
| Plunger and core | Stainless steel |
| Springs | Stainless steel |
| Seal material | FPM |



2

FEATURES

Maximum allowable pressure 50 bar*
 Maximum fluid viscosity 25cSt (mm²/s)
 Ambient temperature : with class F coil -10°C +55°C
 with class H coil -10°C +80°C
 Universal mounting position



| CODE ② | Connection G ISO 228 | Orifice mm | KV m ³ /h | Differential pressure bar | | | Nominal power | | | Coil | | Seal | Temp. range °C |
|------------------|----------------------------|---------------|-------------------------|---------------------------|-----|----|---------------|---------------|------------|--------|-------|-------|----------------|
| | | | | Min | Max | | AC Inrush | VA Holding | DC Watt | Series | Width | | |
| | | | | | AC | DC | | | | | | | |
| W106BV30///..... | 1/4" | 3 | 0.18 | 0 | 14 | 6 | 20 | 15 | 10 | 2 | 30 | FPM=V | -10+130 |
| W106BV40///..... | 1/4" | 4 | 0.26 | 0 | 7 | 3 | 20 | 15 | 10 | 2 | 30 | | |

② Coil

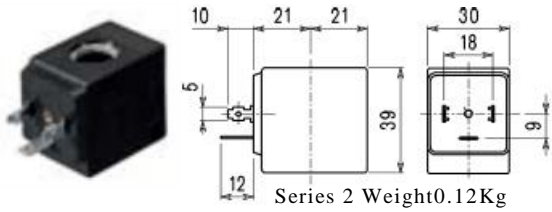
*REMARK: The maximum allowable pressure PS for steam is 2,5bar (gauge pressure)



| COIL | Alternating Current ~50/60Hz Volt | | | | | | | Direct Current Volt | | | Electrical connection | Connectors |
|--------------------------------|--------------------------------------|-----|-----|-----|------------|-----|-----|------------------------|-----|-----|--------------------------|-------------------------|
| | 12 | 24 | 48 | 110 | 220 230 | 240 | 380 | 12 | 24 | 48 | | |
| Series 2 Width 30 Code ② | 20A | 20B | 20C | 20D | 20E | 20F | 20G | 200 | 201 | 202 | DIN43650A | PG9 code 10349000 |

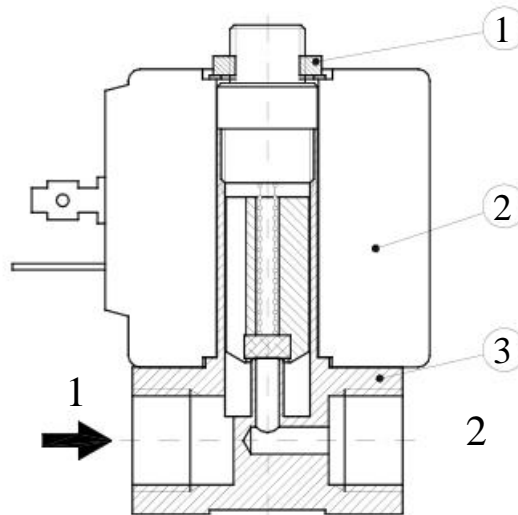
DESCRIPTION
 Class F insulation
 Voltage tolerance
 AC +15%-10%
 DC ±10%
 Protection class
 IP65 with connector mounted
 IP00 without connector
 Continuous service ED100%

OPTIONS
 Class H insulation
 Cable attached
 Special coil voltages
 Special coil powers

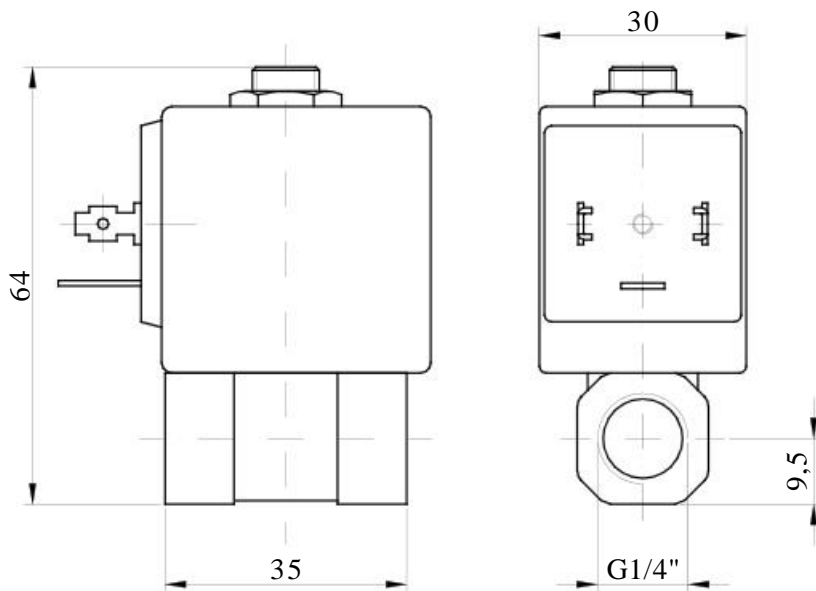


SPARE PARTS LIST

- 1. Coil fixing nut
- 2. Coil
- 3. Valve



OVERALL DIMENSION



Weight=0.22 Kg